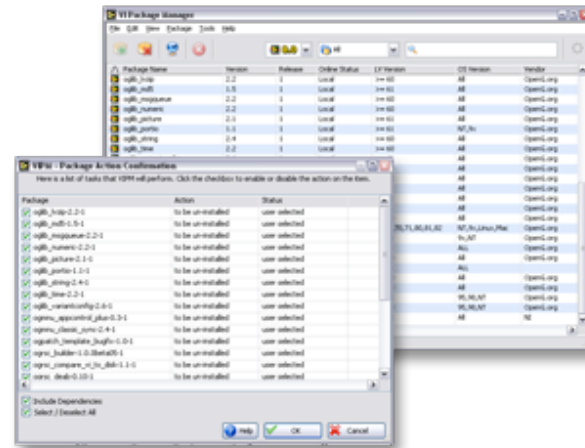




VI Package Manager™ 1.0

VI Package Manager™ (VIPM) is a package management tool that organizes and maintains VI Packages™ within your LabVIEW environment. It is the tool for obtaining and configuring LabVIEW libraries and development tools. Currently all OpenG libraries and tools are supported for download using VIPM. VIPM allows you to quickly access online code repositories and get them into your LabVIEW development environment in the shortest amount of time possible so you can get to the work of solving your automation problem.



[System Requirements](#) • [Release Notes](#) • [Documentation](#)

A Better Experience for Installing LabVIEW Tools and add-ons

VI Package Manager 1.0 has an intuitive interface and to download, install, and manage VI Packages containing useful LabVIEW tools onto your LabVIEW development environment. It delivers LabVIEW tools and add-ons faster than ever. Packed with useful features like Integrated Search, Dependency Management, and Automatic Updates, VI Package Manager will change the way you experience the software development in LabVIEW, for the better.

Complete Access to OpenG Libraries and Tools

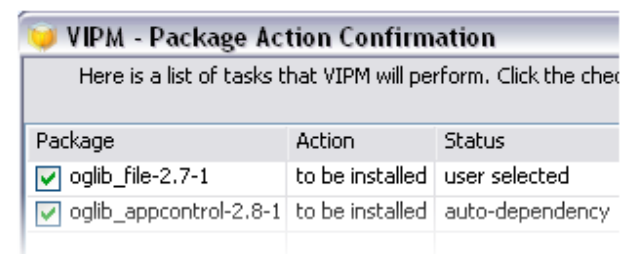
VIPM connects to an online repository of OpenG packages and allows you complete access to these packages of open source libraries and reuse tools.

Automatic Check for VIPM Updates

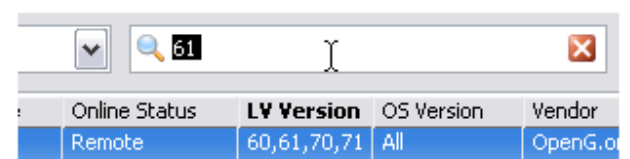
The new Check for Updates feature makes it easy to get the latest updates to VIPM. VIPM automatically notifies you when a new version of VIPM is available for download and allows you to download VIPM using your default web browser.

Learn More

Automatic Dependency Resolution



Integrated Search



Package Dependency Management

When you install packages, VIPM automatically ensures that you download and install all the packages that are needed.

Automatic Check for Package Updates

VIPM automatically checks the Internet to see when new versions of packages are available. When new versions of packages are available, VIPM notifies you and allows you to install them in just two clicks.

Download Packages Directly from the Internet

VIPM connects to the Internet to find and download LabVIEW tools and add-ons. All you need to do, is search for what you want, specify the tools that you want to install, and let VIPM do the rest.

Integrated VI Package Searches

There are a lot of VI packages on the Internet. VIPM's integrated VI package search, let's you quickly find the tools that you are looking for.

Streamlined-user Interface

The VIPM developer team has spent an enormous amount of time, fine tuning VIPM's user interface to provide the high-quality software user experience that has become know as the *JKI User Experience*. Its intuitive design helps you quickly get done the work you are trying to do, with as little effort as possible. With all the features you need, such as Integrated Search, Column Sorting, Right-Click Menus, Dependency Management, and much more.

Cross-platform Compatible

Whether you develop LabVIEW software for Windows, Mac OS X, or Linux, VIPM will be right there along side you, helping you manage your VI Packages. VIPM is built from the ground-up to be cross-platform compatible and will run on all the platforms supported by the LabVIEW development environment.

Simultaneously Manage Multiple LabVIEW Versions

VIPM can manage as many LabVIEW installations as you have installed on your computer, from LabVIEW 6.0 to 8.0. VIPM is a stand-alone desktop application that runs outside of LabVIEW.

Advanced Context-help For All Key Features

VIPM provides context sensitive help to assist you in getting started with VIPM. Just press the help button and help is on the way.

Local	60,61,70,71	NT,9X,Mac,Linux	
Local	60,61,70,71	NT,9x,Linux,M	OpenG.o
Local	61,70,71	All	OpenG.o

Manage Multiple LabVIEW Versions

LabVIEW			
In order for VIPM to function with your version of LabVIEW it must be listed in the registered LabVIEW versions below:			
Version	Port	Location	
LV 7.1	3363	C:\Program Files\National Instruments\LabVIEW 7.1	
LV 8.0	3363	C:\Program Files\National Instruments\LabVIEW 8.0	